



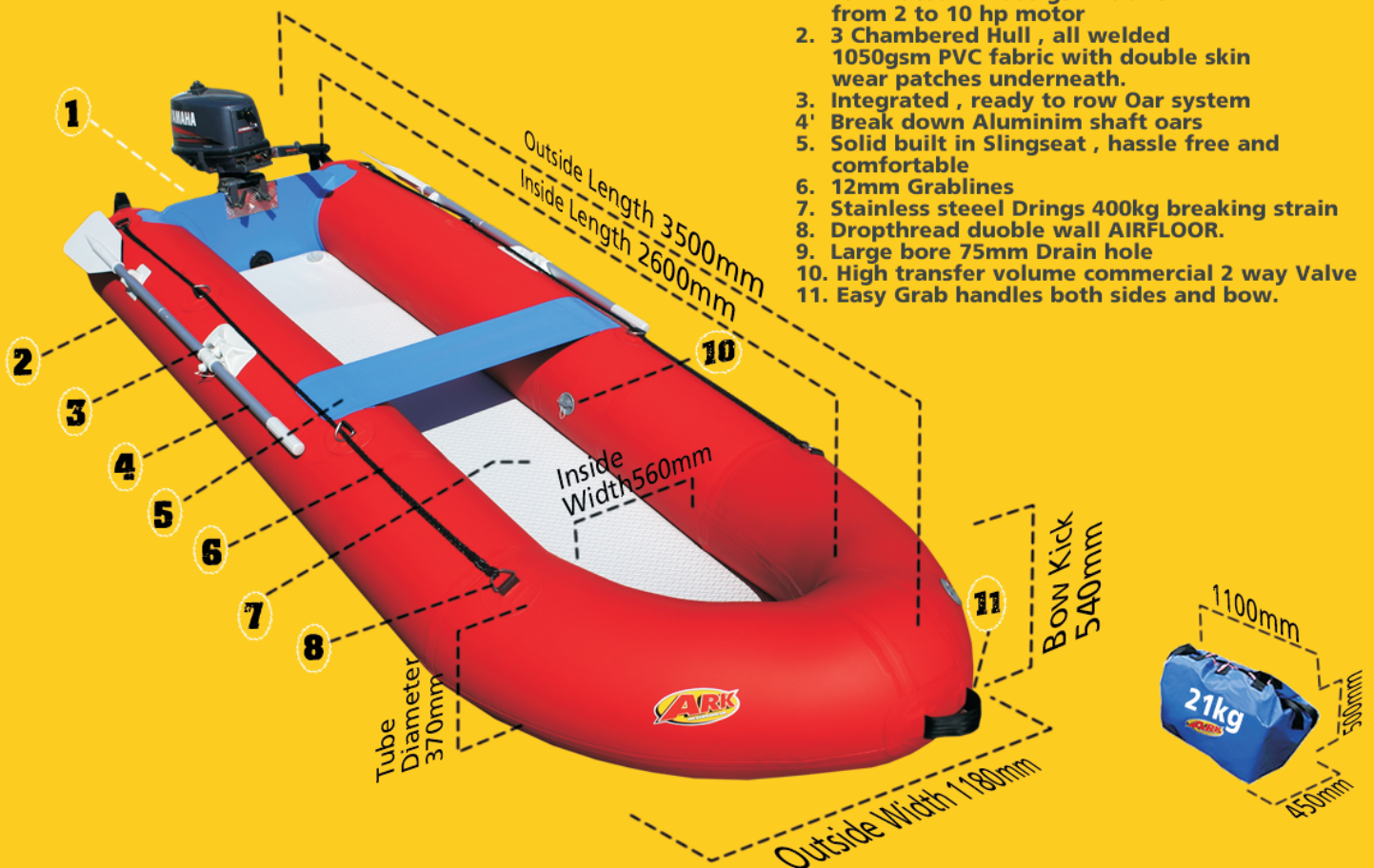
Documents, Boat Markings and Compliance Plates The Fishduc Fd 350

Contents

1. Specifications
2. SAMSA Buoyancy Compliance
3. ISO 6185 Boat Markings and Compliance 3

1. Specifications

FISHDUC FD 350





The Fishduc Fd350

2.SAMSA Buoyancy Certificate

SAMSA BUOYANCY COMPLIANCE CERTIFICATE



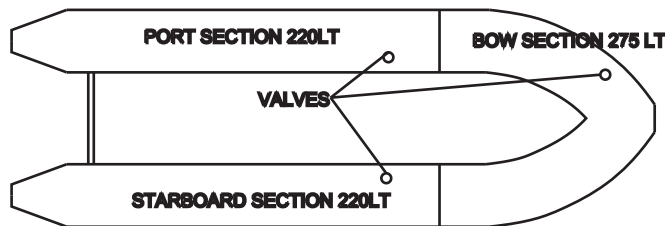
MODEL-	FISHDUC FD2
Capacity	3 Persons
Max Engine	10 hp
Length	3.5metres
Width	1.18 metres
Tube Diameter	380mm
Total No of Air Chambers	3 + Airfloor (or closed cell foam floor)
Total Volume of Chambers	(275 + 220 +220 + 100) = 815 lts
Weight of Boat with engine	57 kg
Total weight of Crew	225 kg
Total Weight Boat and Crew	282
Buoyancy of smallest chamber	220 lt
Required Buoyancy 60%	170kg
Percentage Buoyancy	130%

Description

A 3.5 metre Inflatable boat with 380 mm tube diameter.Three air chambers in the main collar and inflatable or closed cell foam floor.The main collar is divided into 3 airtight independent chambers the volume of which are 275 lt in the bow section , and 220lt In each of the Port and Starboard sections .

Buoyancy Calculations

Calculations are based on assumption that only one of the smallest of the three main collar chambers are inflated ie 220 lt With a 10 hp motor of 37 kg we calculate the load as 37 + 75 +75 +75+20 = 282 kg. The formula for required buoyancy is 60 % of this weight expressed as litres this 282 X 60% is which is 170 lt . Thus the buoyancy ratio is 220 / 170 = 130%



Manufacturers Statement

I have applied my mind to the details provided by the owner and inspected the vessel concerned and find no inconsistencies which would cause me to question that the vessel has not been fitted as declared .The declared buoyancy can reasonably be expected to comply with the regulations

Signed
William Edwards

.....
The Owner ARK INFLATABLES

ARK INFLATABLES (ck95/31795/23)



Documents, Boat Markings and Compliance Plates

The Fishduc FD350

3. Boat Markings as per ISO 6185

= 484 kg = 2 = 4	
= 8 hp Max	DESIGN CATEGORY D
= 0.35 bar 3.5 psi	
MANUFACTURER	: ARK INFLATABLES
COUNTRY OF ORIGIN	: SOUTH AFRICA
SERIAL NUMBER	:
MODEL NUMBER	: FISHDUC FD2
HIN CODE :	
ZA-ARK.....	
DETERMINED BY ISO 6185-1 CAT D APPLIES.	

CAUTION

- GET PADDLESPTS INSTRUCTIONS SPECIFIC TO THIS TYPE OF CRAFT AND INTENDED USAGE
- OBTAIN CERTIFIED FIRST AID TRAINING AND CARRY FIRST AID AND RESCUE/SAFETY EQUIPMENT
- ALWAYS WEAR AN APPROVED PERSONAL FLOTATION DEVICE
- ALWAYS WEAR A HELMET WHERE APPROPRIATE
- DRESS APPROPRIATELY FOR WEATHER CONDITIONS. COLD WATER AND COLD WEATHER CAN RESULT IN HYPOTHERMIA
- CHECK YOUR EQUIPMENT PRIOR TO EACH USE FOR SIGNS OF WEAR OR FAILURE
- NEVER PADDLE ALONE
- DO NOT PADDLE IN FLOOD CONDITIONS
- BE AWARE OF APPROPRIATE RIVER WATER LEVEL, TIDAL CHANGES, DANGEROUS CURRENTS, WEATHER CHANGES, AND STRONG OFFSHORE WINDS
- SCOUT UNFAMILIAR WATER AND PORTAGE IF IN DOUBT.
- DO NOT EXCEED YOUR PADDLING ABILITY
- CONSULT A PHYSICIAN PRIOR TO PADDLESPT TRAINING
- DO NOT USE THIS PRODUCT UNDER THE INFLUENCE OF ALCOHOL OR MIND ALTERING DRUGS
- FOLLOW THE MANUFACTURERS RECOMMENDATIONS FOR THE USE OF THIS PRODUCT
- IF ADDITIONAL OUTFITTING IS REQUIRED SEEK ADVICE FROM THE MANUFACTURER

THE USER OF THIS PRODUCT ACKNOWLEDGES BOTH AN UNDERSTANDING AND AN ASSUMPTION OF THE RISKS INVOLVED IN PADDLESPTS



www.arkinflatables.com

Ark Inflatables reserves the right to modify any specification in the course of research and design.

All specifications have a 3% tolerance

Determined by and compliant with ISO 6185 (Cat 1)